



ANSHAN YES OPTOELECTRONICS DISPLAY CO.,LTD

**SPECIFICATIONS FOR
LIQUID CRYSTAL DISPLAY MODULE**

MODEL NO.: YMS202-01AICBDCL

DATE:DEC.13. 2010

Approved	Checked	Department

CUSTOMER:

MODEL NO.:

DATE:

Approved	Checked	Department

ADD: 215# QIANSHAN ROAD, ANSHAN LIAONING P.R.CHINA

TEL: 86-412-5211859 FAX: 86-412-5211729 P.C.:114044

E-mail : yes@yes-lcd.com, yeslcd@globalsources.com

Web: <http://www.yes-lcd.com>

<http://www.asiansources.com/sante.com>

DATE DEC. 13. 2010			TECHNICAL SPECIFICATION
LCM	YES	YMS202-01AICBDCL	Page 1 of 18

REVISION HISTORY

Rer	Date	Item	Page	Remark

DATE DEC. 13. 2010			TECHNICAL SPECIFICATION
LCM	YES	YMS202-01AICBDCL	Page 2 of 18

LIST

I . General Specifications -----(4-7)

II . The Characteristics and Reliability Test -----(8-9)

III. The Equipment and LCD Measuring Method----- (10-11)

IV. Standard Specifications for Product Quality -----(12-13)

V . Attached Drawing -----(14-15)

VI. Packing----- (16)

VII. Precautions For Use----- (17-18)

DATE DEC. 13. 2010			TECHNICAL SPECIFICATION
LCM	YES	YMS202-01AICBDCL	Page 3 of 18

I .General Specifications

1.The Features :

- (1). Low power consumption 5.0 V power supply
- (2). Drive method: 1/16 duty, 1/5 bias
- (3). Viewing direction: 6:00
- (4). Operating tempration: -20~70°C
- (5). Storage tempration: -30~85°C
- (6). Display type: STN mode, Transmissive, Negative type display

2.Mechanical Data and Conditions:

- (1) Number of Characters----- 20 Characters* 2 Line
- (2) Module Size-----116.0 w *37.0 h mm
- (3) Viewing Area ----- 83.0 w * 18.6 h mm
- (4) Dot Size -----0.6 w * 0.65 h mm
- (5) Character Size ----- 3.2 w * 5.55 h mm
- (6) Outline Dimensions-----See Attached Drawing

3. Absolute Maximum Ratings

Characteristics	Symbol	Value
Power Supply Voltage	V_{CC}	-0.3 to +7.0
LCD Driver Voltage	V_{LCD}	$V_{CC}-10.0$ to $V_{CC}+0.3$
Input Voltage	V_{IN}	-0.3 to $V_{CC}+0.3$

DATE DEC. 13. 2010			TECHNICAL SPECIFICATION
LCM	YES	YMS202-01AICBDCL	Page 4 of 18

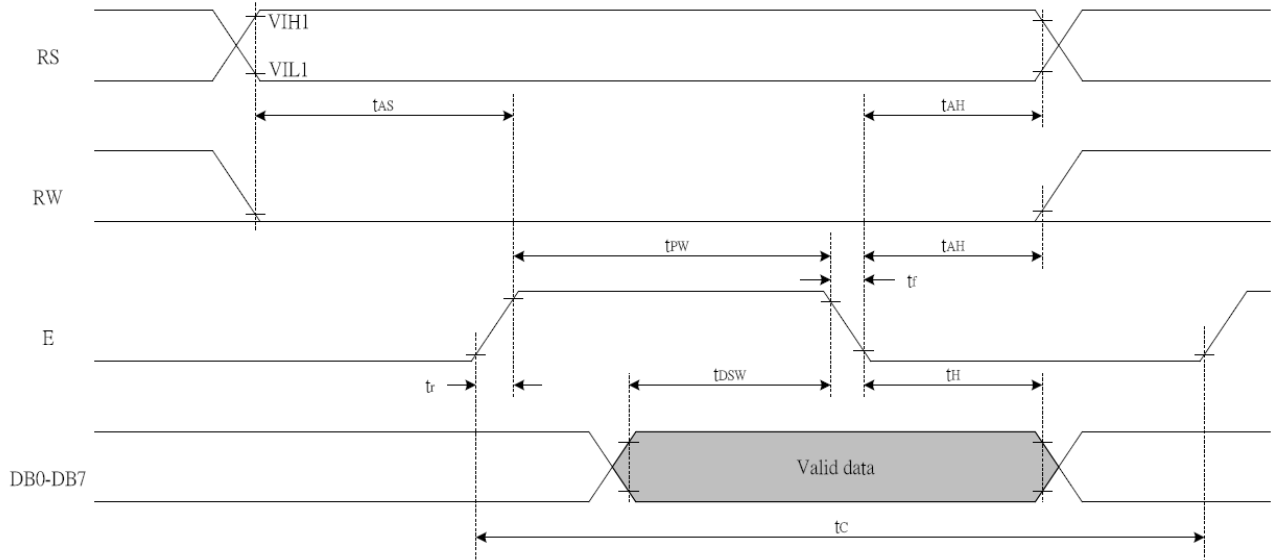
4.Pin Connections:

Pin No.	Symbol	Function
1	Vss	Ground
2	Vdd	Logic Supply Voltage
3	Vee	LCD Driver Voltage Input
4	RS	Data/Instruction Register Select
5	R/W	Read/Write Select
6	E	Enable Signal
7-14	DB0-DB7	Data Bus Line
15-16	A, K	LED backlight

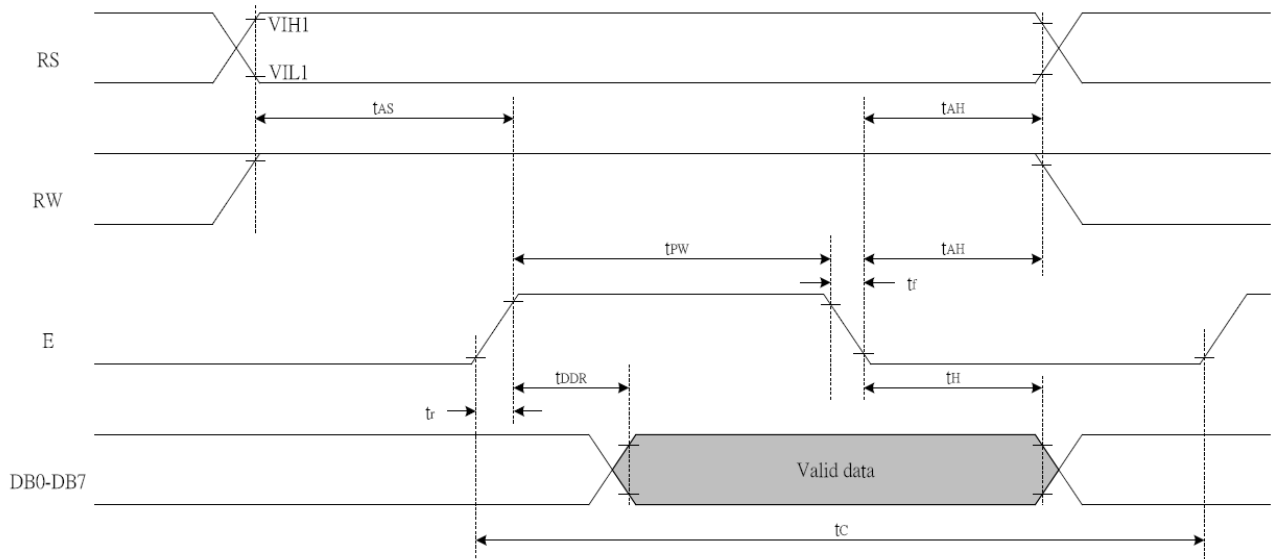
DATE DEC. 13. 2010			TECHNICAL SPECIFICATION
LCM	YES	YMS202-01AICBDCL	Page 5 of 18

5. AC CHARACTERISTICS

Writing data from MPU to ST7066U



Reading data from ST7066U to MPU



DATE DEC. 13. 2010			TECHNICAL SPECIFICATION
LCM	YES	YMS202-01AICBDCL	Page 6 of 18

<i>Write Mode (Writing data from MPU to ST7066U)</i>						
T _C	Enable Cycle Time	Pin E	1200	-	-	ns
T _{PW}	Enable Pulse Width	Pin E	460	-	-	ns
T _R ,T _F	Enable Rise/Fall Time	Pin E	-	-	25	ns
T _{AS}	Address Setup Time	Pins: RS,RW,E	0	-	-	ns
T _{AH}	Address Hold Time	Pins: RS,RW,E	10	-	-	ns
T _{DSW}	Data Setup Time	Pins: DB0 - DB7	80	-	-	ns
T _H	Data Hold Time	Pins: DB0 - DB7	10	-	-	ns
<i>Read Mode (Reading Data from ST7066U to MPU)</i>						
T _C	Enable Cycle Time	Pin E	1200	-	-	ns
T _{PW}	Enable Pulse Width	Pin E	480	-	-	ns
T _R ,T _F	Enable Rise/Fall Time	Pin E	-	-	25	ns
T _{AS}	Address Setup Time	Pins: RS,RW,E	0	-	-	ns
T _{AH}	Address Hold Time	Pins: RS,RW,E	10	-	-	ns
T _{DDR}	Data Setup Time	Pins: DB0 - DB7	-	-	320	ns
T _H	Data Hold Time	Pins: DB0 - DB7	10	-	-	ns

DATE DEC. 13. 2010			TECHNICAL SPECIFICATION
LCM	YES	YMS202-01AICBDCL	Page 7 of 18

II.The Characteristics and Reliability Test

1.Electro-Optic Characteristics

Condition:TEMP=(23±3)°C

NO	Item	Symbol	Min.	Typ.	Max.	Unit	Condition
1	Supply Voltage(Logic)	Vdd-Vss		5.0		V	
2	LCD Operating Voltage	Vdd-V ₀		5.1		V	-20°C
			4.5	4.7	4.9	V	25°C
				4.3		V	70°C
3	Response Time	Ton		76		ms	
		Toff		420		ms	
4	Contrast	CR	2				
5	Viewing Angel	12H	θ 1	50		Deg.	(CR≥2.0)
		6H	θ 2	72			
		3H	θ 3	62			
		9H	θ 4	62			

2. Characteristics of backlight (LED unit)

Color:White

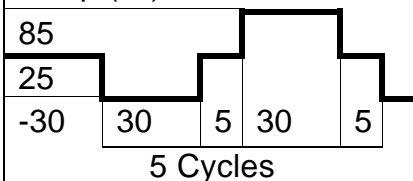
Item	Symbol	Min.	Typ.	Max.	Unit	Condition
Forward Voltage	Vf	2.9	3.2	3.5	V	If=15 mA
Reverse Current	I _r			15	μ A	V _r =3V

WARNING:

A BACKLIGHT IS A KIND OF CURRENT DEVICE,IT MUST CONNECT A RESISTANCE FOR LIMITING CURRENT ,OR IT WILL BE DAMAGED.

DATE DEC. 13. 2010			TECHNICAL SPECIFICATION
LCM	YES	YMS202-01AICBDCL	Page 8 of 18

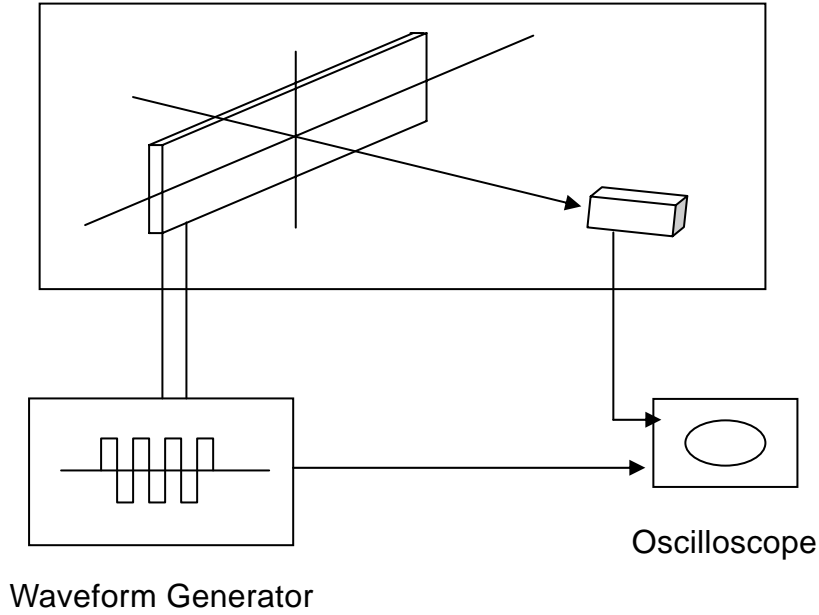
3. Reliability Test

No	Items	Test Condition	Equipment	Test Result
1	High Temp Storage	Temp: $85 \pm 2^{\circ}\text{C}$ Time:96h Restore:24h	Tenny	Passed
2	Low Temp Storage	Temp: $-30 \pm 3^{\circ}\text{C}$ Time:96h Restore:24h	Tenny	Passed
3	High Temp Operating	Temp: $70 \pm 2^{\circ}\text{C}$ Vop:5.0V Time:24h Restore:24h	Tenny	Passed
4	Low Temp Operating	Temp: $-20 \pm 3^{\circ}\text{C}$ Vop:5.0V Time:24h Restore:24h	Tenny	Passed
5	High Temp High Hum Storage	Temp: $40 \pm 2^{\circ}\text{C}$ Hum:95%Rh Time:96h Restore:24h	Tenny	Passed
6	Thermal Shock	Temp:($^{\circ}\text{C}$)  5 Cycles Restore:24h	Tenny	Passed

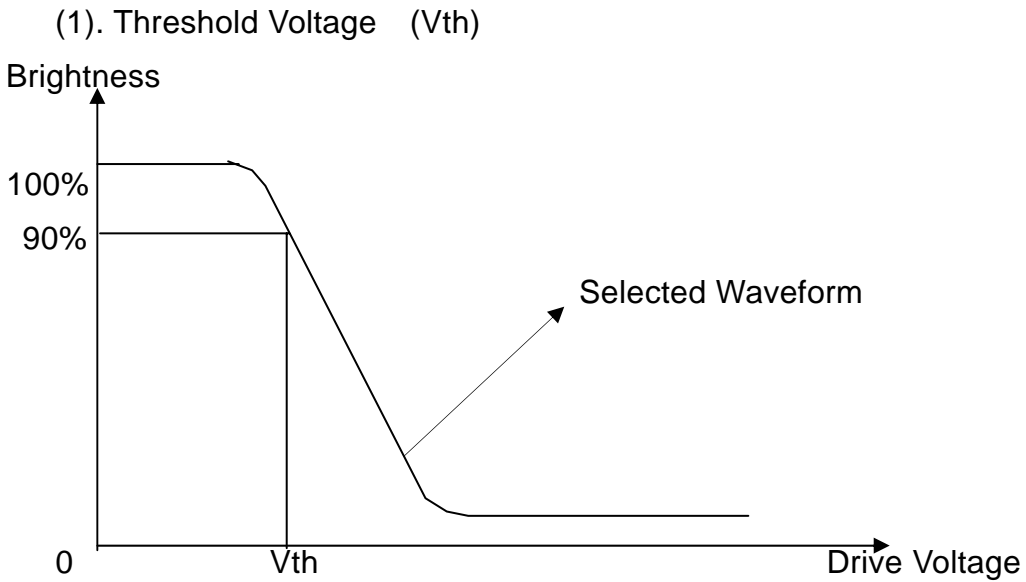
DATE DEC. 13. 2010			TECHNICAL SPECIFICATION
LCM	YES	YMS202-01AICBDCL	Page 9 of 18

III.The Equipment and LCD Measuring Method

1. Equipment

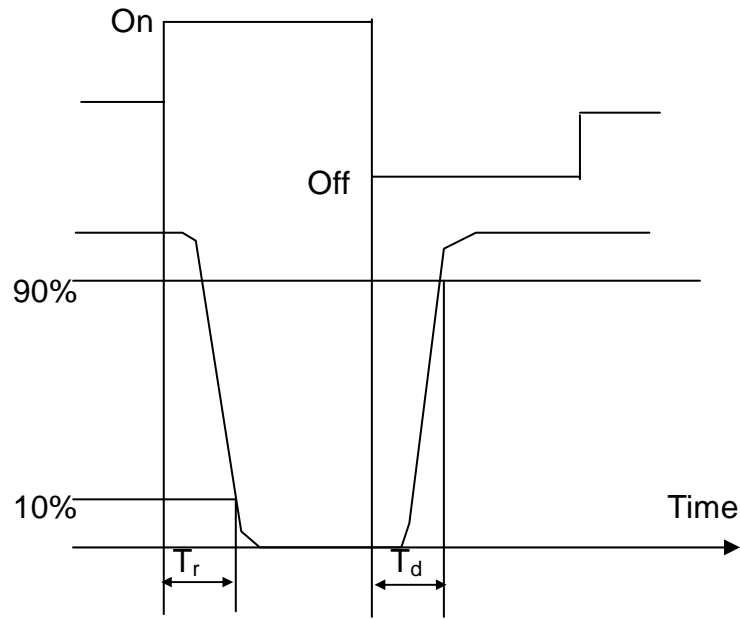


2. Definition

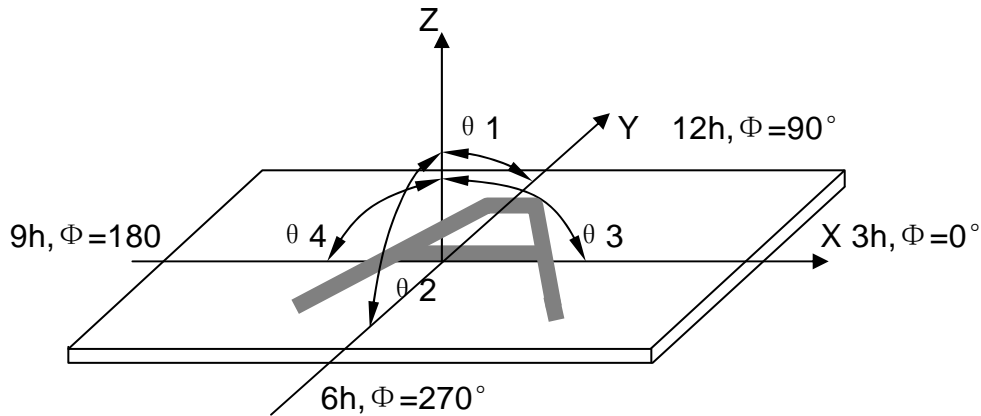


DATE DEC. 13. 2010			TECHNICAL SPECIFICATION
LCM	YES	YMS202-01AICBDCL	Page 10 of 18

(2). Response Time



(3). Viewing Angle:



(4). Contrast Ratio (Positive)

$$CR = \frac{\text{Brightness of non-selected wave-form}}{\text{Brightness of selected wave-form}}$$

3. Reliability Test:

Equipment : TENNY

DATE DEC. 13. 2010			TECHNICAL SPECIFICATION
LCM	YES	YMS202-01AICBDCL	Page 11 of 18

IV. Standard Specifications for Product Quality

1.MTBF

More than 50,000 hours.

2. Manner of Test::

(1)The Test Must Be Under 40w Fluorescent Light, And The Distance Of View Must Be At 30cm.

(2)The Test Direction Is Based On Around 15° - 45° Of Vertical Line.

3. Definition Of Defects

(1) Major Defects

A:Non-Display

B:Segment Missing

C:Over Current

D:Segment Short

E:Sealant Dishardexn

F:Wrong Polarizer Direction

(2)Minor Defects: The Others.

4.Major Defects Should Be In AQL 0.25,and The Minor In AQL 1.00

DATE DEC. 13. 2010			TECHNICAL SPECIFICATION
LCM	YES	YMS202-01AICBDCL	Page 12 of 18

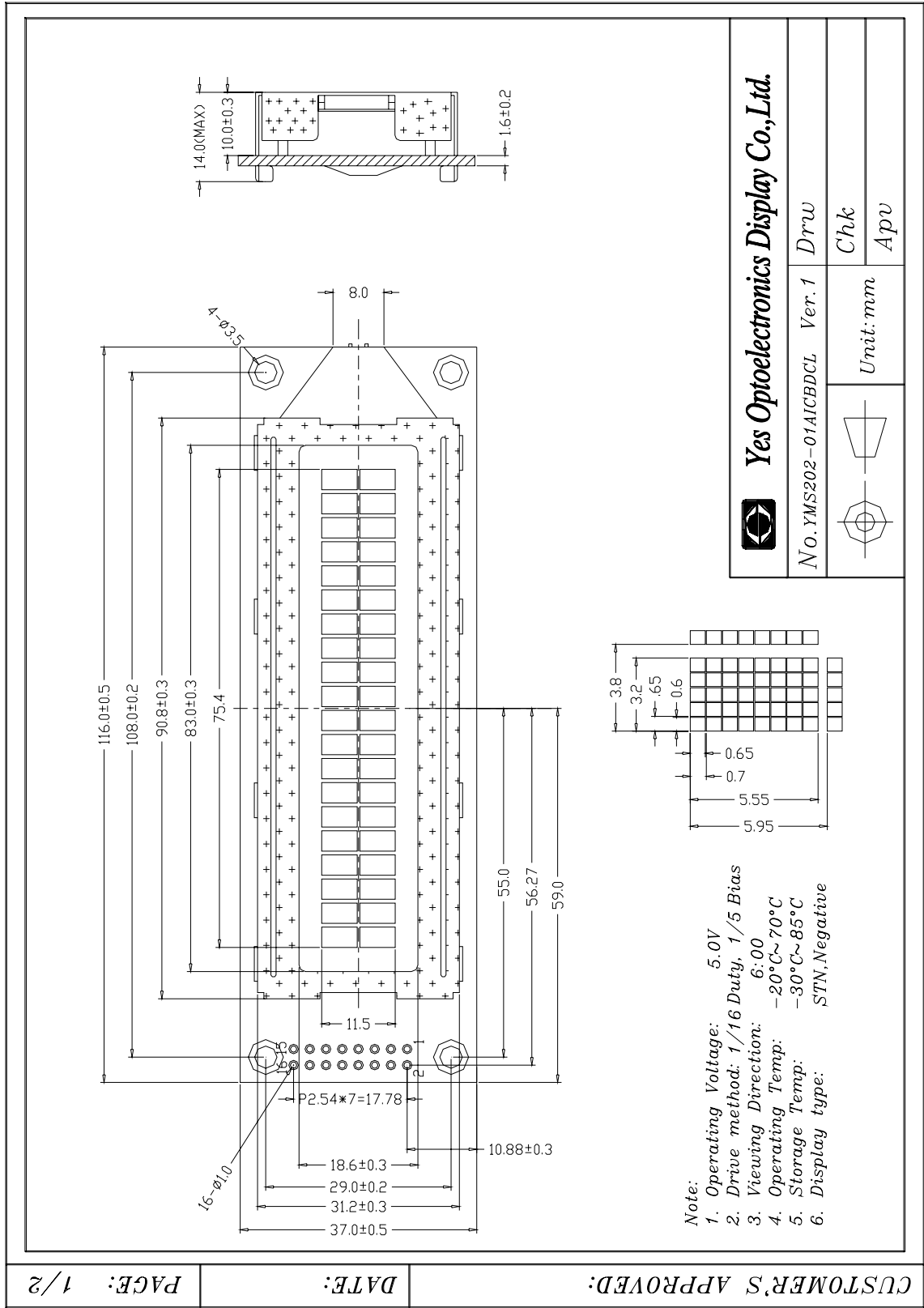
5. Inspection Item and Standards

Item	The Standard Of Quality Inspection	Checking Manner	Quality Ratio
Frame	Smooth and even surface,no crack,no scratch,no rusty,and not be wrenched out of shape.the range between convex and concave is: $d \leq 0.35\text{mm}$,and the frame must be connected to the ground.	Checking With Eyes And Using Vernier Caliper, Multimeter	100%
LCD	The major defects would be reject.no scratch and no dusty on the LCD glass surface. $d \leq 0.15\text{mm}$ $n \leq 2$ diameter of bubble' $d \leq 0.5$ $n \leq 2$ damaged size of polarizer.	Check It When Displaying	100%
The Relative Position of LCD and Frame	The sealant mouth of the LCD must be at the same side with the frame's.	Checking With Eyes	100%
The Relative Position of PCB Panel and Frame	The frame installing direction must be correct.the twisted angle of the pin is from 45° to 60° ,the pin is vertical to PCB panel and it must be in the middle position of the installing holes.	Checking With Eyes	100%
LED	1.The led would be White 2.The led would be uniform.	Checking With Eyes	100%
Function Test	1. The major defects must be reject. 2. Background changes evenly and no disorderly displaying phenomenon. 3. Display no shortage.	Check It When Displaying	100%

Note:D~Diameter N~Quantity Unit:mm

DATE DEC. 13. 2010			TECHNICAL SPECIFICATION
LCM	YES	YMS202-01AICBDCL	Page 13 of 18

V.Attached Drawing



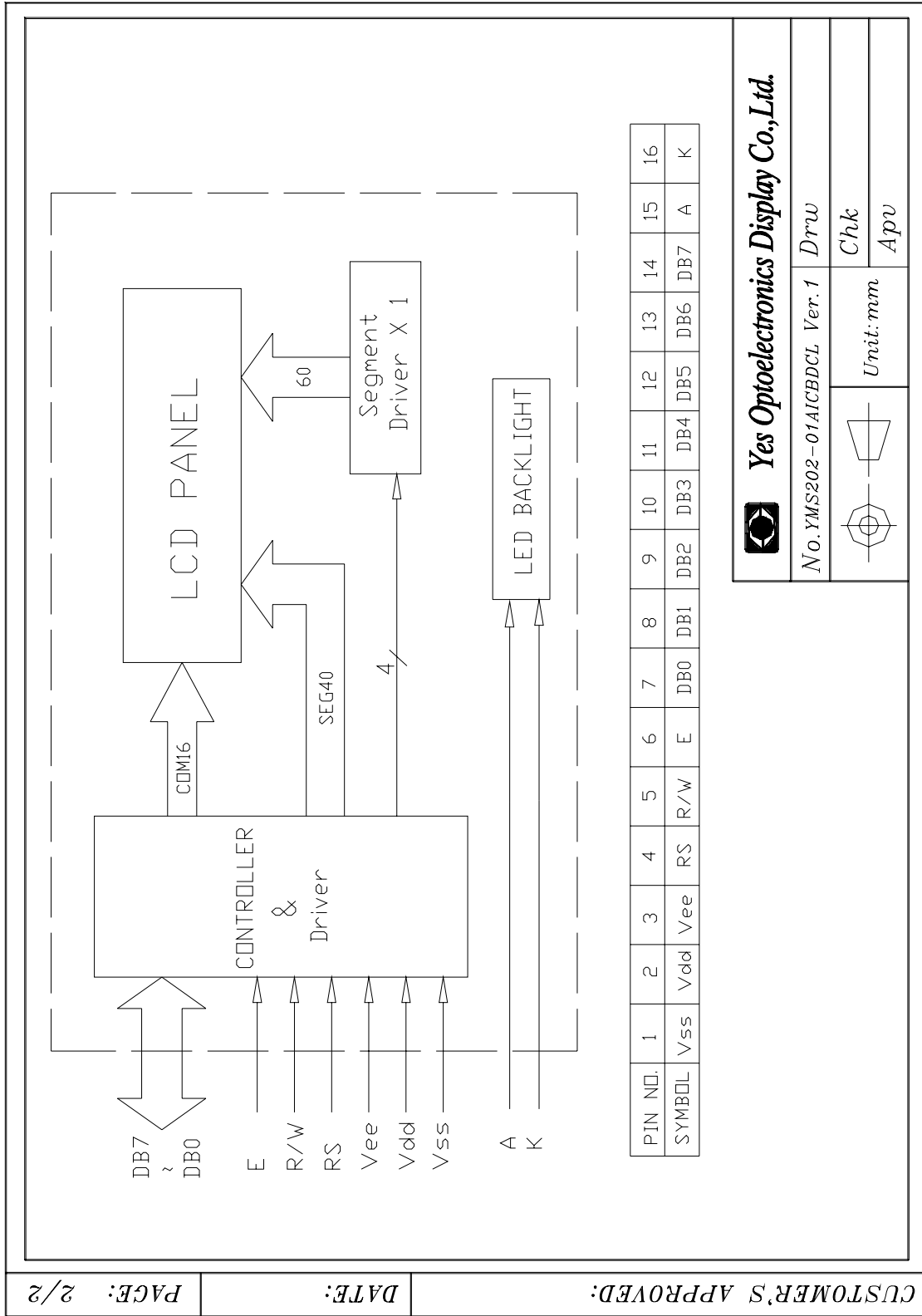
Yes Optoelectronics Display Co., Ltd.

No. YMS202-01AICBDCL Ver. 1

Unit: mm

Drw Chk App

DATE DEC. 13. 2010			TECHNICAL SPECIFICATION
LCM	YES	YMS202-01AICBDCL	Page 14 of 18



PAGE: 2/2

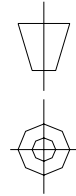
DATE:

CUSTOMER'S APPROVED:

Yes Optoelectronics Display Co., Ltd.

No. YMS202-01AICBDCL Ver. 1

Draw



Unit: mm

Chk

App

DATE DEC. 13. 2010

LCM

YES

YMS202-01AICBDCL

Page 15 of 18

TECHNICAL SPECIFICATION

VI.Packing

<i>CUSTOMER'S APPROVED:</i>	<i>DATE: 2010.12.10</i>	<i>PAGE: 1/1</i>
-----------------------------	-------------------------	------------------

PRODUCT PART NO.:YMS202-01AICBDCL

Packing Process:

- 1) Putting Modules into each black ESD bag
- 2) Putting Modules with black ESD bag into the air bubble bag
- 3) Putting 40 pcs Modules into the inner box (TYPE:H67) and space filled filling piece
- 4) Putting 6 small inner boxes into one out carton
- 5) Packing finished

Note: 40x6=240pcs/Outcarton
 Dimension (Small carton): 385*325*60mm Dimension (Out carton): 394*344*470mm

NO.	YMS202-01AICBDCL	Ver. 1	Drw:		Chk:		Apv:	
ANSHAN YES OPTOELECTRONICS DISPLAY CO., LTD								

DATE DEC. 13. 2010		TECHNICAL SPECIFICATION
LCM	YES	YMS202-01AICBDCL
		Page 16 of 18

VII. Precautions For Use

1. Safety

- (1) Do not swallow any liquid crystal, even if there is no proof that liquid crystal is poisonous.
- (2) If the LCD panel breaks, be careful not to get liquid crystal to touch your skin.
- (3) If skin is exposed to liquid crystal, wash the area thoroughly with alcohol or soap.

2. Storage Conditions

- (1) Store the panel or module in a dark place where the temperature is $23\pm 5^{\circ}\text{C}$ and the humidity is below $50\pm 20\% \text{RH}$.
- (2) Store in anti-static electricity container.
- (3) Store in clean environment, free from dust, active gas, and solvent.
- (4) Do not place the module near organics solvents or corrosive gases.
- (5) Do not crush, shake, or jolt the module.
- (6) Do not exposed to direct sun light of fluorescent lamps.

3. Installing LCD Module

Attend to the following items when installing the LCM.

- (1) Cover the surface with a transparent protective plate or touch panel to protect the polarizer and LC cell.
- (2) When assembling the LCM into other equipment, the spacer to the bit between the LCM and the fitting plate should have enough height to avoid causing stress to the module surface, refer to the individual specifications for measurements.

4. Precautions For Operation

- (1) Viewing angle varies with the change of liquid crystal driving voltage (V_0). Adjust V_0 to show the best contrast.
- (2) Driving the LCD in the voltage above the limit will shorten its lifetime.
- (3) Response time is greatly delayed at temperature below the operating temperature range. However, this does not mean the LCD will be out of the order. It will recover when it returns to the specified temperature range.

DATE DEC. 13. 2010			TECHNICAL SPECIFICATION
LCM	YES	YMS202-01AICBDCL	Page 17 of 18

(4) When turning the power on, input each signal after the positive/negative voltage becomes stable.

(5) Do not apply water or any liquid on product which composed of T/P.

5.Handling Precautions

(1) Avoid static electricity which can damage the CMOS LSI; please wear the wrist strap when handling.

(2) The polarizing plate of the display is very fragile. so, please handle it very carefully.

(3) Do not give external shock.

(4) Do not apply excessive force on the surface; it may cause display abnormal .

(5) Do not wipe the polarizing plate with a dry cloth, as it may easily scratch the surface of plate.

(6) Do not use ketonics solvent & Aromatic solvent, use with a soft cloth soaked with a cleaning naphtha solvent.

(7) Do not operate it above the absolute maximum rating.

(8) Do not remove the panel or frame from the module.

(9) Do not apply water or any liquid on product which composed of T/P.

DATE DEC. 13. 2010			TECHNICAL SPECIFICATION
LCM	YES	YMS202-01AICBDCL	Page 18 of 18